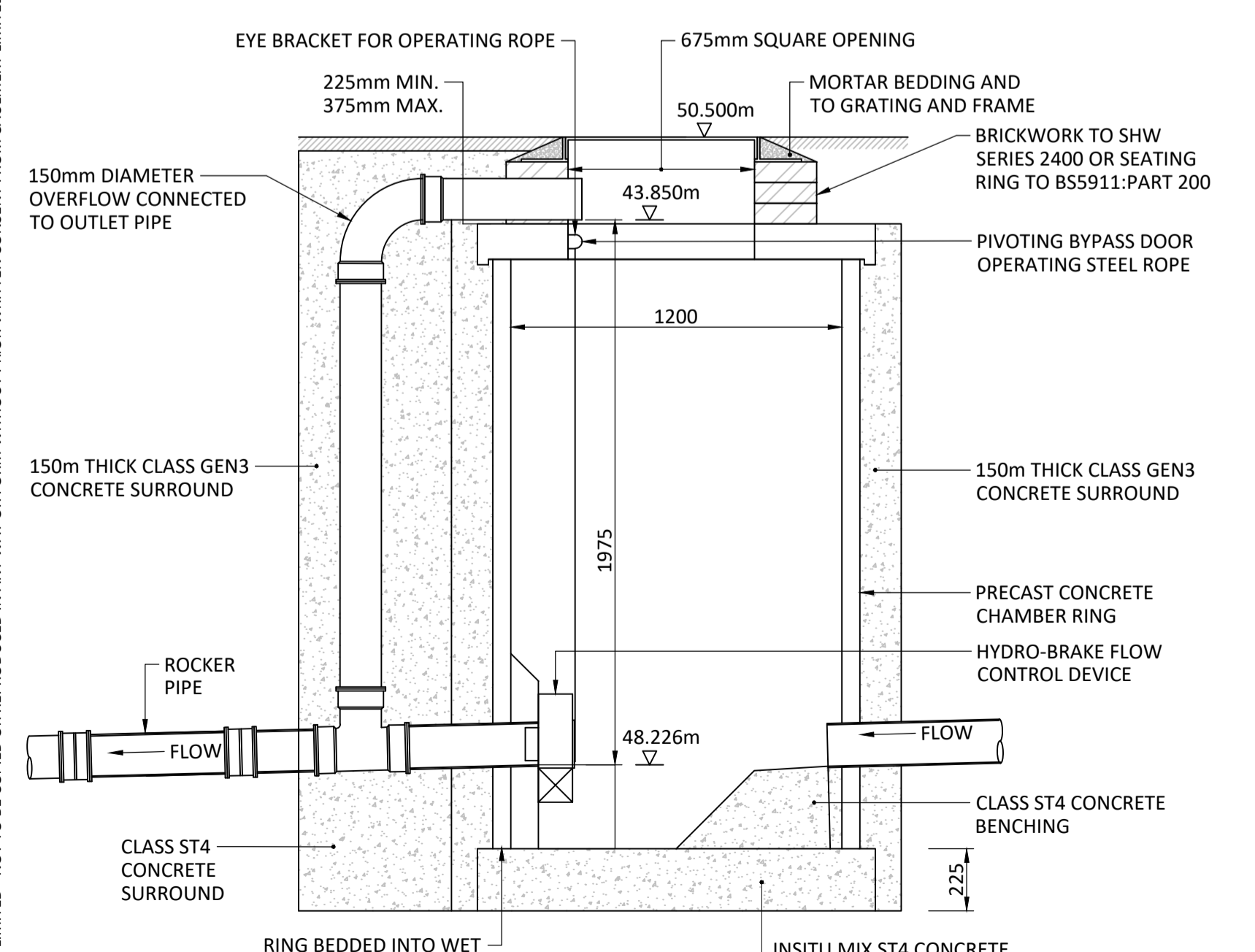
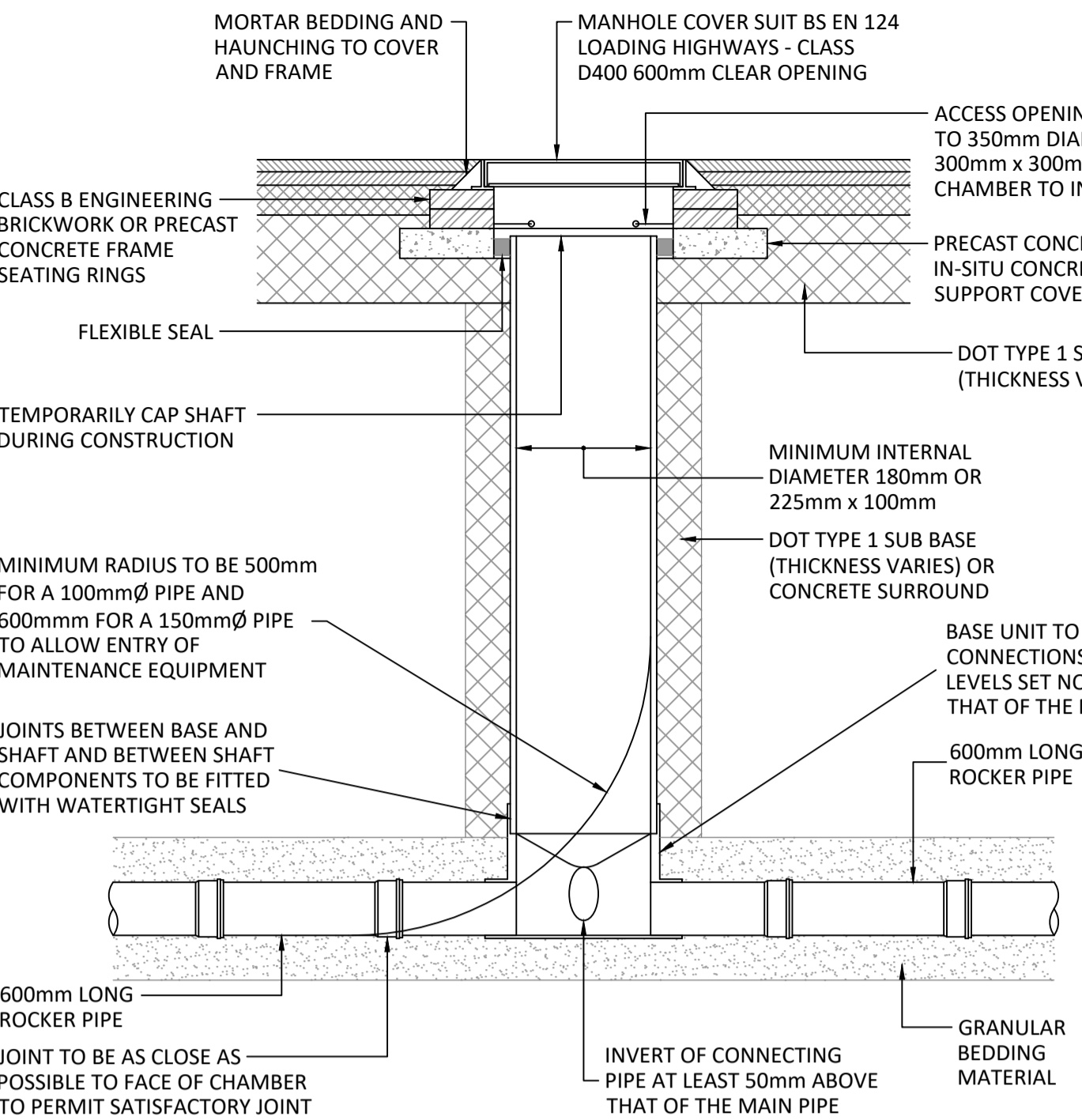


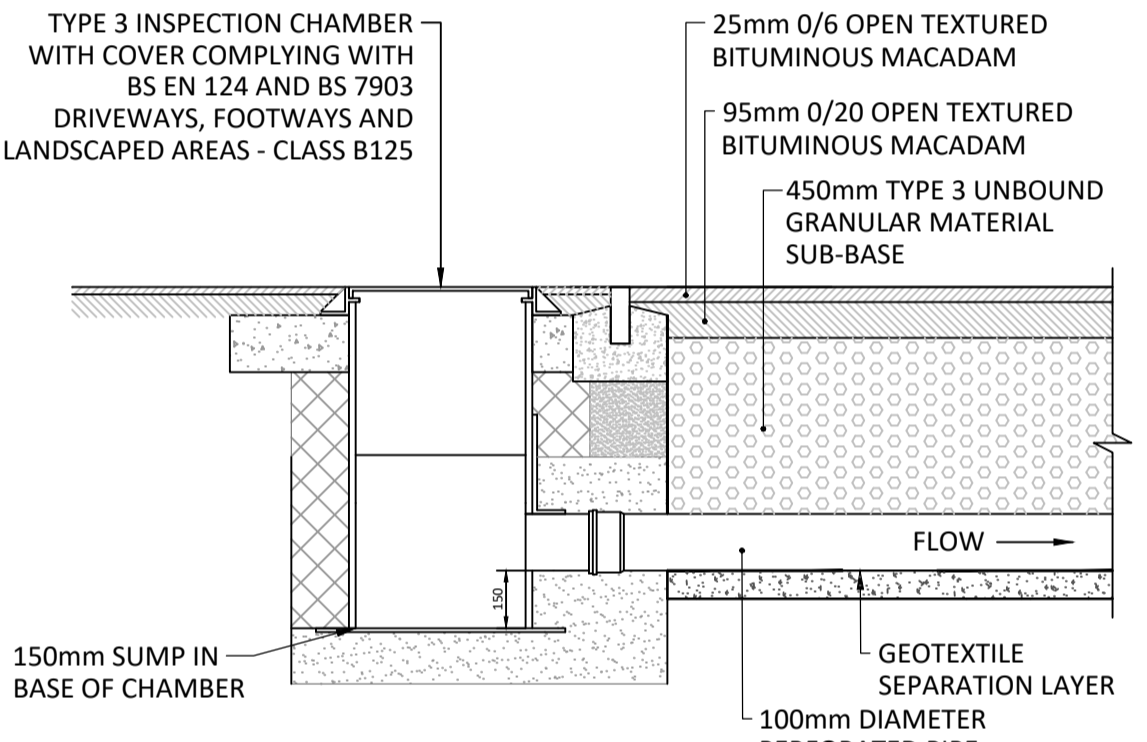
TYPE 2 INSPECTION CHAMBER
Scale 1:20



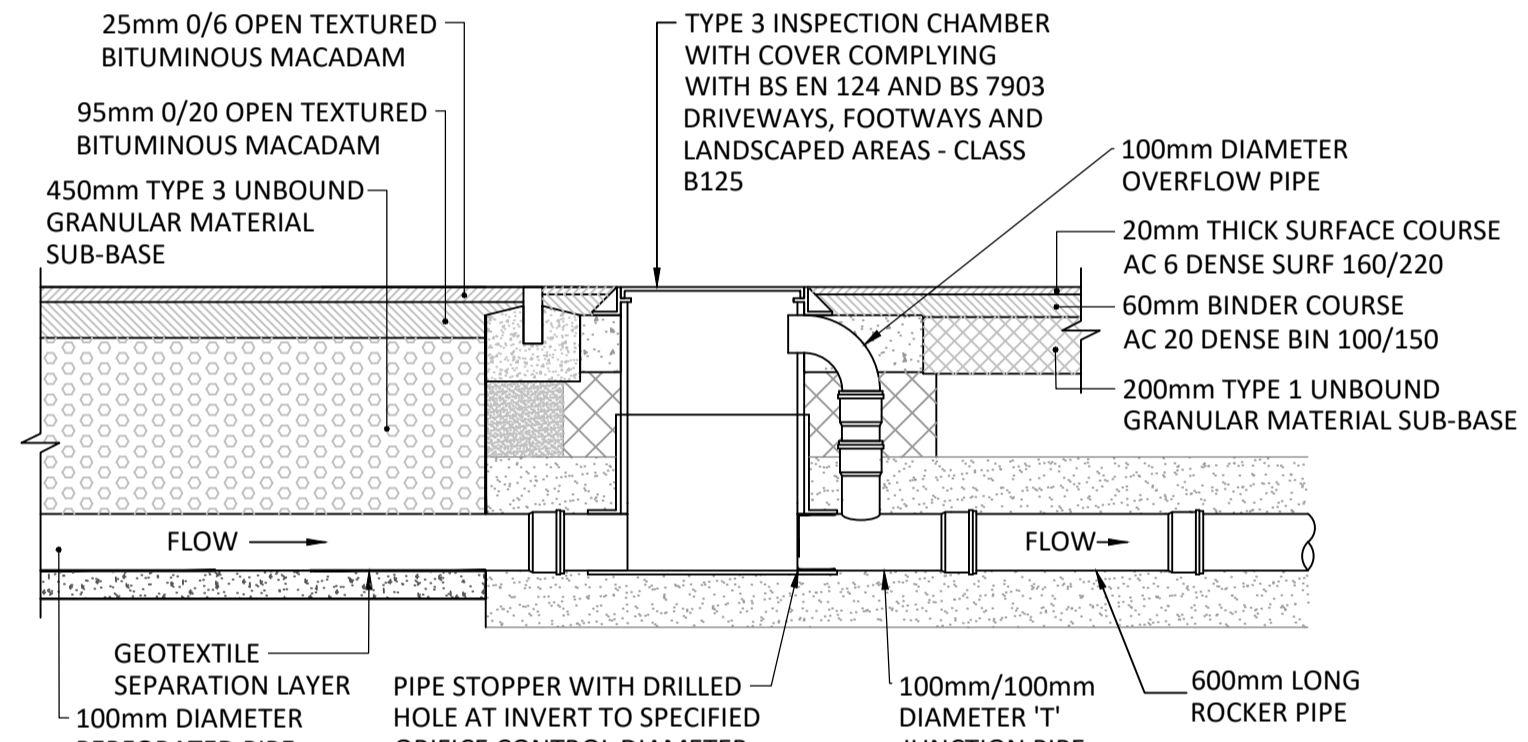
TYPE 10 HYDRO-BRAKE FLOW CONTROL CHAMBER
Scale 1:20



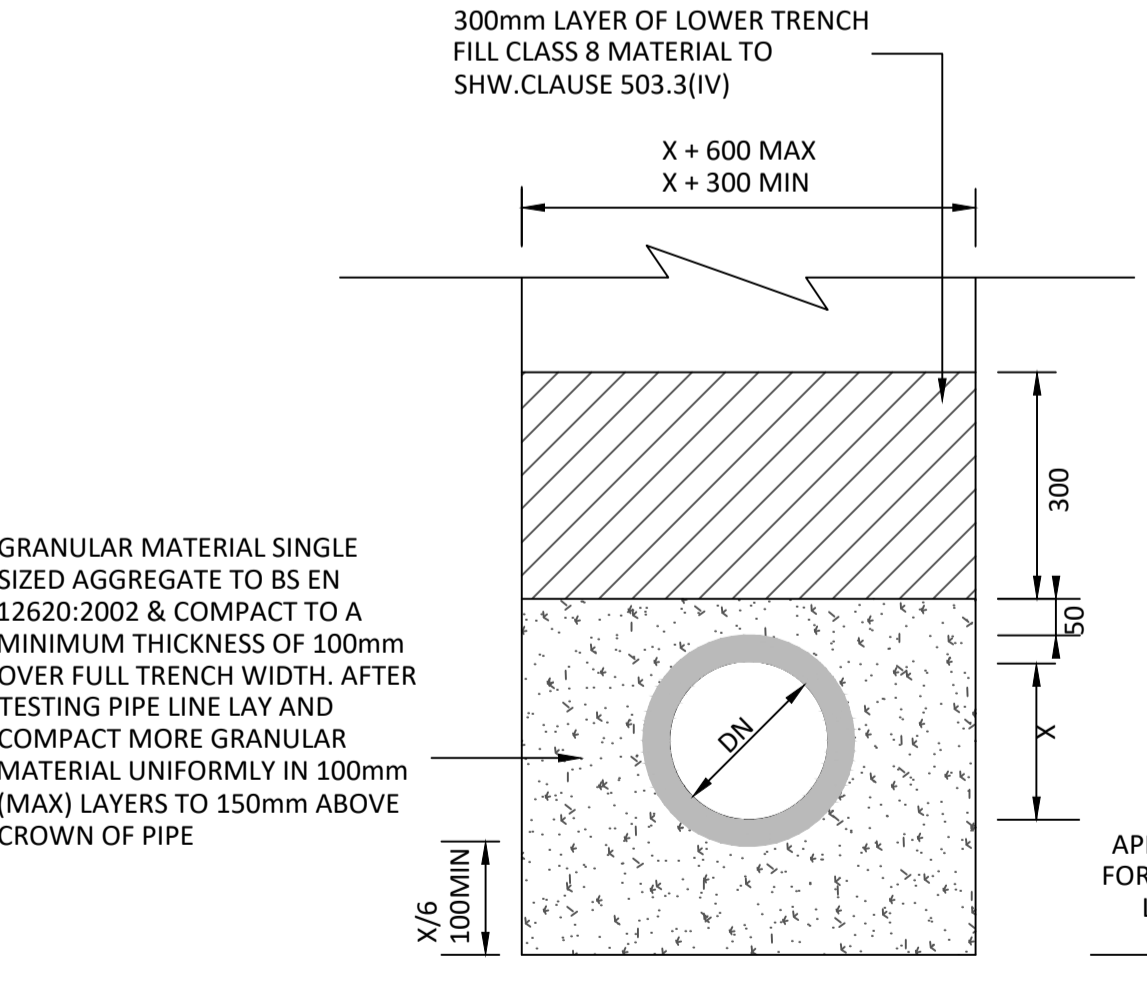
TYPE 4A INSPECTION CHAMBER (FLEXIBLE MATERIAL)
3m depth from cover level to soffit of pipe in areas subject to vehicle loading, non-entry
Scale 1:20



TYPICAL PRIVATE CATCHPIT TYPE 8 CHAMBER DETAIL
Scale 1:20



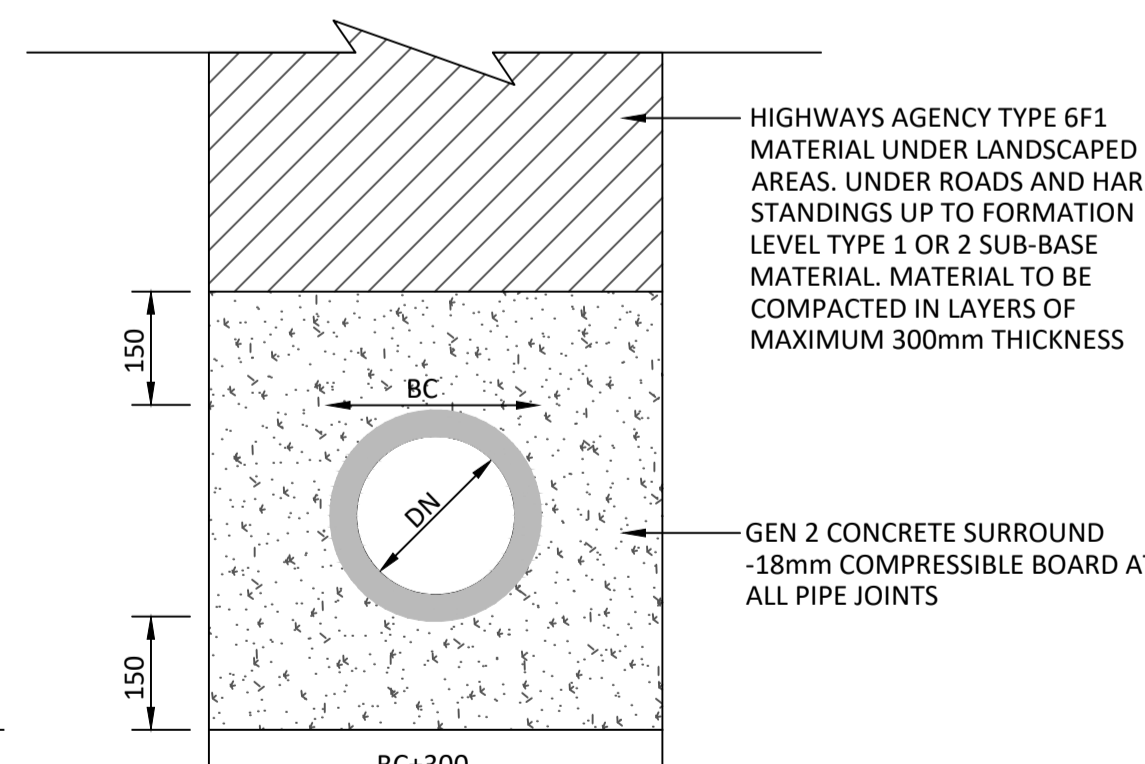
TYPICAL ORIFICE FLOW CONTROL TYPE 9 CHAMBER DETAIL
Scale 1:20



BEDDING CLASS 'S'
Scale 1:10

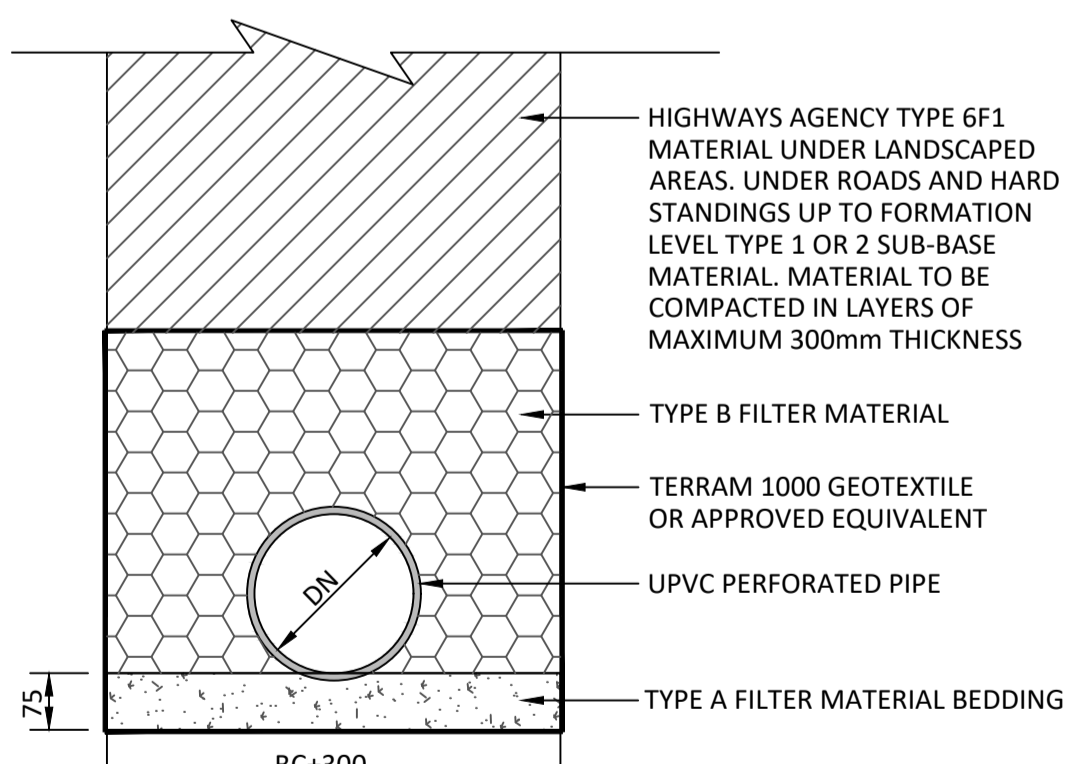
MINIMUM DEPTH OF COVER TO THE CROWN OF GRAVITY PIPES WITHOUT PROTECTION IN ACCORDANCE WITH SEWERS FOR ADOPTION 7th EDITION CLAUSE B3.1.10 SHOULD BE AS FOLLOWS:

- DOMESTIC GARDENS AND PATHWAYS WITHOUT THE POSSIBILITY OF VEHICULAR ACCESS, 0.35m;
- DOMESTIC DRIVEWAYS, PARKING AREAS AND YARDS WITH HEIGHT RESTRICTIONS TO PREVENT ENTRY BY VEHICLES WITH A GROSS VEHICLE WEIGHT IN EXCESS OF 7.5 TONNES, 0.5m;
- DOMESTIC DRIVEWAYS, PARKING AREAS AND NARROW STREETS WITHOUT FOOTWAYS (E.G. MEWS DEVELOPMENTS) WITH LIMITED ACCESS FOR VEHICLES WITH A GROSS VEHICLE WEIGHT IN EXCESS OF 7.5 TONNES, 0.9m;
- AGRICULTURAL LAND AND PUBLIC OPEN SPACE, 0.9m;
- OTHER HIGHWAYS AND PARKING AREAS WITH UNRESTRICTED ACCESS FOR VEHICLES WITH A GROSS VEHICLE WEIGHT IN EXCESS OF 7.5 TONNES, 1.2m.

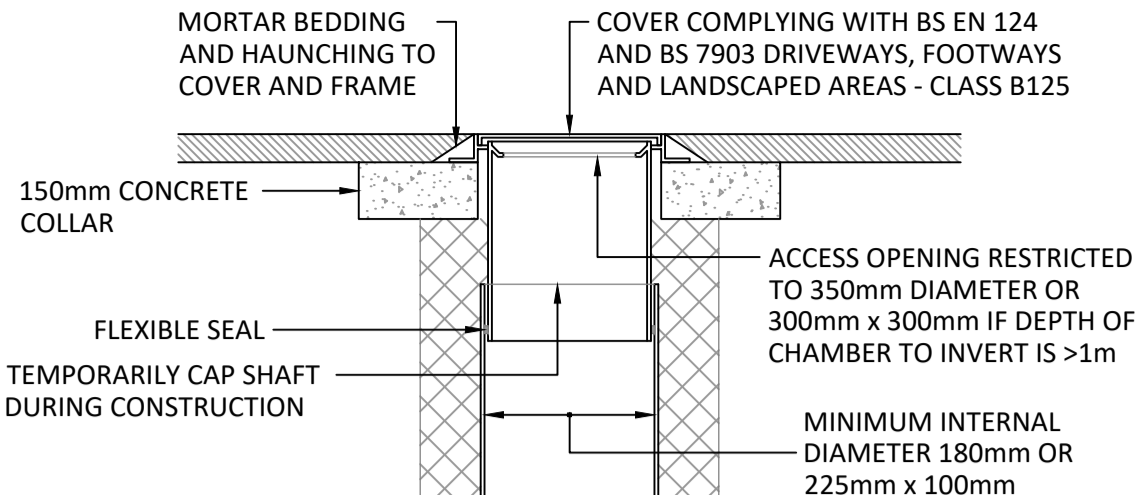


BEDDING CLASS 'Z'
Scale 1:10

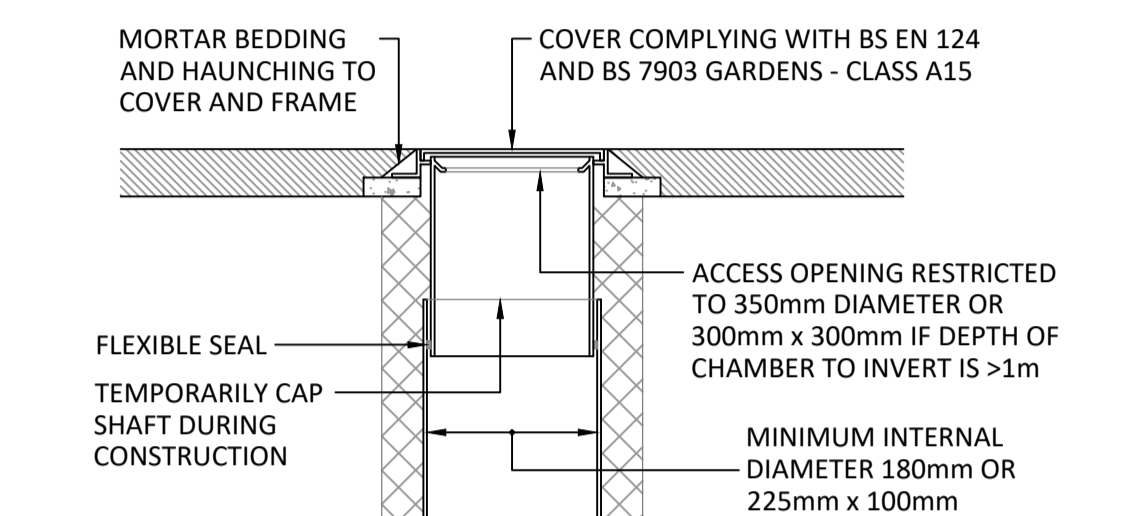
TO ALL PIPE WITH COVER FROM FINISHED SURFACE TO CROWN GREATER THAN 900mm IN TRAFFICKED AREAS OR GREATER THAN 600mm COVER IN LANDSCAPED AREAS OR UNDER BUILDINGS.



TYPE F FILTER DRAIN
Scale 1:10



ALTERNATIVE TYPE 4B INSPECTION CHAMBER (FLEXIBLE MATERIAL)
3m maximum depth cover level to soffit of pipe in domestic driveways or footways, non-entry
Scale 1:20



ALTERNATIVE TYPE 4C INSPECTION CHAMBER (FLEXIBLE MATERIAL)
3m maximum depth cover level to soffit of pipe in domestic gardens, non-entry
Scale 1:20

NOTE

- DO NOT SCALE FROM THIS DRAWING. WORK FROM FIGURED DIMENSIONS ONLY. ALL DIMENSIONS ARE IN METRES AND ALL LEVELS ARE IN METRES ABOVE ORDNANCE DATUM U.N.O.
- NO DEVIATION FROM THE DETAILS SHOWN ON THIS DRAWING WILL BE ALLOWED WITHOUT THE PRIOR PERMISSION IN WRITING.
- THIS DRAWING IS TO BE READ IN CONJUNCTION WITH ALL RELEVANT ARCHITECTS, ENGINEERS AND SPECIALIST DRAWINGS AND SPECIFICATIONS.
- ALL DRAINAGE WORKS ARE TO BE CARRIED OUT IN ACCORDANCE WITH SEWERS FOR ADOPTION 7th EDITION, THE BUILDING REGULATIONS AND GWYNEDD COUNTY COUNCIL'S STANDARD REQUIREMENTS.
- FOR DRAINAGE SCHEDULES AND SPECIFICATION REFER TO DRAWING NUMBER 5318-CAU-XX-XX-DR-C-7600.

P01	SAB PRE-APP SUBMISSION	NWO	JES	-	01/03/24
REV	MODIFICATIONS	BY	RE	AP	DATE
PURPOSE OF ISSUE					STATUS
DRAFT					SO
CLIENT:					
PROJECT:					
FORMER YSGOL BABANOD COED MAWR BRON Y DE BANGOR					
TITLE:					
DRAINAGE CONSTRUCTION DETAILS SHEET 1					
DRAWN BY	REVIEWED BY	AUTHORISED BY	SCALE @ A1		
EB	NWO	-	AS SHOWN		
DATE	JOB REF:	REVISION			
27/02/24	5318	P01			
DRAWING NUMBER					
5318-CAU-XX-XX-DR-C-5600					

© COPYRIGHT CAULMERT LIMITED - NOT TO BE COPIED OR REPRODUCED IN ANY WAY OR FORM WITHOUT PRIOR WRITTEN CONSENT FROM CAULMERT LIMITED

Registered Office: inTec, Parc Menai, Bangor, Gwynedd, LL57 4FG Company Registered No: 06716319